



**HEALTHCARE &  
SAFETY SERVICES  
FOR GLOBAL  
WORKFORCES**

**Protecting our partner's most valuable assets.**

## **Corporate Office**

**1028 Forum Drive  
Broussard, LA 70518**

**customer@xstrememd.com**

**(877) 520-2911**



**xstrememd.com**



# OUR STORY

XstremeMD was founded with a mission to fill the critical gap in accessible, high-quality medical care for industrial workers in remote and high-risk environments. Before XstremeMD, companies faced limited options: delayed care, costly transports, or no on-site support at all. We changed that.

With over 150 licensed medical and safety professionals, we've spent the last 15+ years delivering boots-on-the-ground support and remote medicine in oil & gas, construction, maritime, manufacturing, and beyond. We understand the job because we've worked the job.

*"Illness and injuries are unpredictable. With the solutions we have today, patients who previously had limited access to definitive health care now have the same, and often better, access to life saving health care as you or I."*

— Joseph Pearson MD, CEO XstremeMD



## Built for the Field. Backed by Experience.

It often takes hours when all we have are minutes. Injuries and illness is unpredictable, striking at the most inopportune time. These patients consume tremendous resources in order to ensure their safety and health, no matter their complaint. Fortunately, we provide a solution to drastically lower costs, decrease medical evacuations, mitigate risk, and most importantly save lives.

Call a single number to connect with trained nurses who will assess your employees 24/7. XstremeMD is the only telemedicine provider with a staff composed of Board Certified Emergency Medicine Physicians with extensive training in occupational medicine.

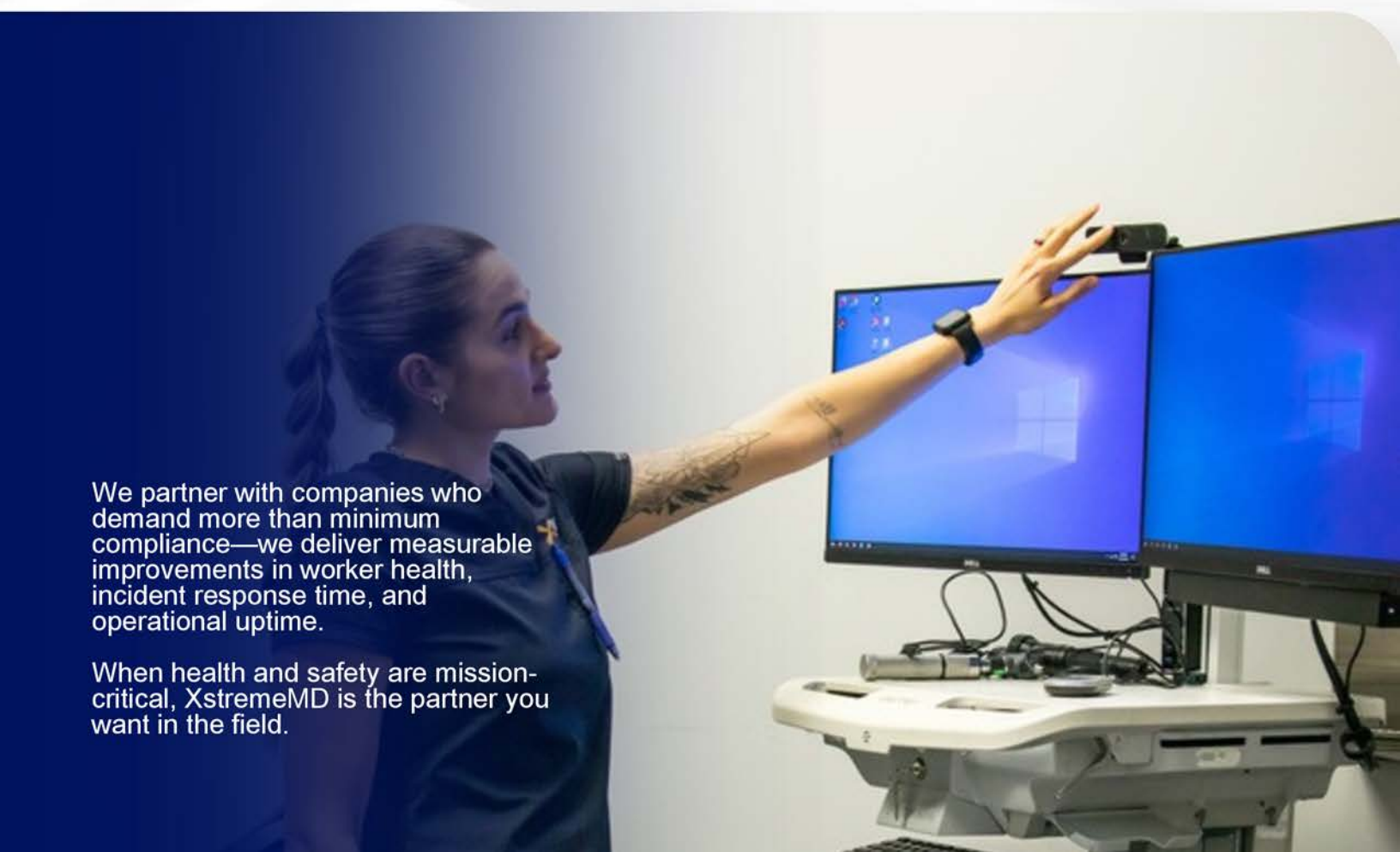
**Our physicians work from within the XMD Command Center and are always available 24/7/365.**



# WHY XSTREMEMD?

## TRUSTED. PROVEN. FIELD-READY.

XstremeMD provides healthcare and safety solutions for remote and on-site workforces around the world. With over 1000 customers depending upon us, over 250,000 patients cared for, and numerous lives saved, we have proven to be a real game changer - saving lives and saving money.

A healthcare professional, likely a nurse or doctor, is shown in profile, wearing dark scrubs and a stethoscope. She is reaching out with her right hand towards a small sensor or camera mounted on top of a dual-monitor computer workstation. The monitors display a blue Windows desktop background. The workstation is on a white mobile cart. The background is a plain, light-colored wall.

We partner with companies who demand more than minimum compliance—we deliver measurable improvements in worker health, incident response time, and operational uptime.

When health and safety are mission-critical, XstremeMD is the partner you want in the field.



# CASE MANAGEMENT



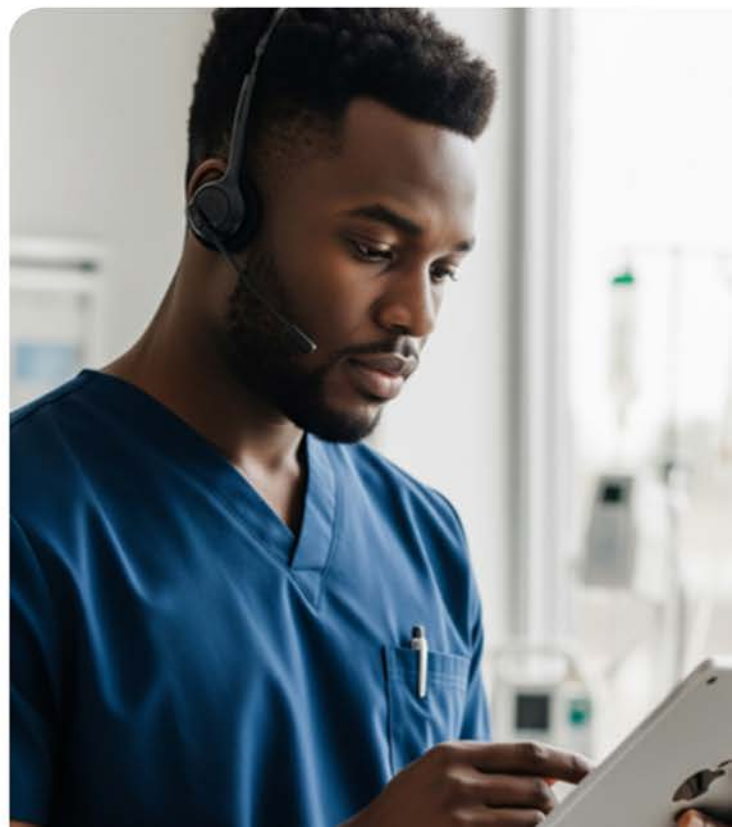
Through our Case Management Program, employers are able to keep employees on-site or return them to work as quickly and safely as possible. Our telephonic care system allows registered nurses to assess injuries in real time, determining whether first aid is sufficient or if a higher level of medical evaluation is needed. This early intervention approach helps prevent unnecessary ER visits, minimizes OSHA recordables, and promotes faster, safer recovery, ultimately protecting your workforce and your bottom line.

*"I appreciate the wonderful job you do. The nurses on call are amazing! And a big help in managing cases so they do not get out of control. I brag on XstremeMD during all of my audits with customers!"*

*— Joyce Ryel, Vice President of HSEQ  
Fortis Energy Services*

## PROACTIVE SUPPORT THAT REDUCES DOWNTIME & LIABILITY

- ✓ Licensed in All 50 States
- ✓ Nationally Recognized Treatment Algorithms
- ✓ 24/7 Call Center/Injury Line
- ✓ 24/7 Nurse CM Coverage - Emergency and
- ✓ Trauma Trained
- ✓ 24/7 Physician Coverage - Board Certified
- ✓ Emergency Medicine
- ✓ Nurse to MD Consult
- ✓ Electronic Medical Record
- ✓ Improved Outcomes
- ✓ Customer Reporting
- ✓ OSHA Sensitive
- ✓ Fee for Service
- ✓ No After-Hour Rate Increases
- ✓ No Retainer Fee





# ONSITE & REMOTE MEDICAL SERVICES

We provide licensed medical personnel and virtual care solutions for industrial worksites, offshore rigs, and remote locations. Our teams are trained to respond to everything from daily clinic needs to emergency trauma care.

XstremeMD delivers professional medical support directly to your worksite; whether you're operating on land, offshore, or in a remote, high-risk environment.

Our integrated approach combines on-site clinicians, telemedicine technology, and custom medical infrastructure to keep your workforce safe, productive, and prepared.

## WE WORK WHERE YOU WORK: LAND, OFFSHORE, AND EVERYWHERE IN BETWEEN



### Services include:

- ✓ Onsite Paramedics, EMTs, and Nurses
- ✓ Virtual Physician Support 24/7 via Telemedicine
- ✓ Emergency Response and Triage
- ✓ Clinical Assessments, Diagnostics, and Treatment
- ✓ Wellness & Preventative Care Support





# ***HSE SUPPORT & SAFETY SERVICES***

We provide both Corporate HSE assistance and on-site guidance to contractors in the field during all phases of Drilling, Completion, Production and Construction Operations. We can also assist in the roll out of client health and safety programs, procedures and initiatives while coaching the field teams in the implementation process.

## ***PROVIDING XSTREME SUPPORT, IN XSTREME ENVIRONMENTS, IN XSTREME SITUATIONS***



We serve as an extension of your HSE department, offering strategic guidance, auditing, training, and field-level coaching that transforms safety from a checklist into a culture.

Our HSE Consultants are trained to provide on-site health and safety guidance to contractors on Clients' HSE processes and procedures, and verify compliance with internal and external requirements.

## ***ELEVATING SAFETY CULTURE FROM THE GROUND UP***

We provide both corporate HSE assistance and on site guidance to contractors in the field during all phases of Drilling, Completion, Production and Construction Operations







# INSPECT DIVISION

Streamlined Occupational Health  
Services for a Ready Workforce

Our INSPECT service streamlines your companies, occupational health needs for your employees, contractors, and associates, ensuring your team receives quality medical evaluations on time. This turnkey service include a comprehensive array of medical assessments, return-to-work, evaluations, and drug testing.

Our comprehensive program includes consulting on program implementation, providing access to our clinic network, services for scheduling appointments, managing health records, payment consolidation, and delivering the results you require.

## **ONE PROGRAM. TOTAL WORKFORCE READINESS.**

Managing occupational health shouldn't slow your operations. XtremeMD's INSPECT Division streamlines your workforce's medical evaluations and recordkeeping so you can stay focused on productivity.

We coordinate services through a national network of clinics, labs, and imaging centers, delivering fast, reliable access to:

- ✓ Pre-employment physicals
- ✓ Deployment and fit-for-duty evaluations
- ✓ Annual audiograms
- ✓ Immunizations, bloodwork, and dental screenings
- ✓ Drug and alcohol surveillance testing

All results are reviewed in-house by licensed clinicians to ensure compliance with your standards and industry requirements. We store, secure, and manage records with full HIPAA compliance; so your team can move forward, cleared and confident.

Additional services include:

- ✓ Return-to-work evaluations
- ✓ Medication declaration and review
- ✓ Customized physicals for DOD, DOS, and global deployments

Whether you're hiring, deploying, or recertifying, INSPECT ensures your people are medically ready to work.

**Employment & Deployment  
Occupational Services**



# EDUCATION AND TRAINING

XstremeMD offers a full range of courses led by experienced instructors who know what it takes to respond in the field. Whether you need to maintain compliance or upskill your team, we bring real-world relevance to every training session.

Our education division doesn't just teach compliance—we train competence. Our programs are designed with your environment in mind, ensuring students leave with practical knowledge and skills that apply directly to their worksite challenges. We also offer flexible scheduling, on-site instruction options, and CAPCE-accredited certifications to meet the needs of a fast-paced workforce.

Whether you're training medics, supervisors, or new hires, we tailor each course to your industry's requirements. Training isn't an expense: it's a strategic investment. With XstremeMD, you equip your workforce with the confidence and clarity needed to perform safely and respond effectively when it matters most.



## Courses offered:

- ✓ ACLS & BLS
- ✓ EMS Safety
- ✓ Advanced Remote Emergency Medical Management (AREMM)
- ✓ Core Compliance
- ✓ PEPL (Ethics & Leadership)
- ✓ Custom onsite safety courses

**CERTIFICATIONS THAT KEEP YOU COMPLIANT AND CAPABLE**



# WE WORK WHERE YOU WORK

From Louisiana marshes to Gulf of America platforms, and everywhere in between—XstremeMD goes where your team goes. Our teams are experienced in working in extreme environments, and our systems are built to scale with your operations. When health and safety cross borders, XstremeMD is already there.

## REAL-TIME MEDICAL & SAFETY SUPPORT WHERE IT MATTERS MOST

But we don't stop at the shoreline. XstremeMD is a truly global healthcare provider, delivering critical support for teams stationed in Guyana, across Latin America, and in remote deployments worldwide. Our telemedicine infrastructure, mobile medical units, and international clinical partnerships make it possible to provide seamless care—no matter where in the world your operations take you.



We specialize in:

- ✓ Domestic land operations
- ✓ Offshore marine & drilling
- ✓ Remote energy projects
- ✓ International operations
- ✓ Turnarounds, shutdowns & construction sites



# MOBILE MEDICAL SUPPORT WHEN AND WHERE YOU NEED IT MOST

## REMOTE EMERGENCY RESPONSE VEHICLES (RERVS)

When minutes matter, mobility saves lives. XstremeMD's Remote Emergency Response Vehicles are purpose-built mobile medical units equipped to bring emergency care directly to remote or hazardous worksites.

Each RERV includes:

- ✓ Climate-controlled treatment space for on-scene triage and care
- ✓ Advanced medical equipment, including AEDs, oxygen, airway kits, trauma supplies & more
- ✓ Real-time telemedicine capabilities, connecting field medics directly to XstremeMD physicians
- ✓ Custom configurations to suit specific site needs (land-based, refinery, construction, remote energy sites)



## CUSTOM JUMP BAGS & HEAT ILLNESS PACKS

These units extend our reach and reduce response time—keeping your workforce safer, reducing downtime, and avoiding unnecessary offsite transport. Whether supporting high-traffic jobsites or standing by for critical operations, our RERVs deliver hospital-grade support in the field.



Every jobsite is different—and so are its risks. XstremeMD prepares your team with custom-built Jump Bags designed to meet your specific environment, from offshore emergencies to heat stress kits.

Common kits include:

- ✓ Heat illness packs (cooling agents, electrolytes)
- ✓ Confined space rescue packs
- ✓ Trauma and bleeding control kits
- ✓ AEDs and airway management tools
- ✓ PPE and field treatment supplies



- ✓ Medical Directorship
- ✓ Physician Topside Support
  - ✓ Telemedicine
  - ✓ Remote Paramedics
  - ✓ Safety Personnel
- ✓ Nurse Injury Management
- ✓ Medication Declaration & Review
- ✓ Global Medical Screening Coordination
  - ✓ Pre-Employment & Fit-For-Duty
- ✓ Deployment Support & Medical Clearance
  - ✓ Education & Training

**24/7/365**

## **GLOBAL - OFFSHORE - LAND SUPPORT**

### **Corporate Office**

1028 Forum Drive  
Broussard, LA 70518

**customer@xstrememd.com**

**(877) 520-2911**



**xstrememd.com**